

# Timber Jamb Into Timber Wall

**Restruct Fire Rated** or **STC40 Acoustic**  
*Fyreline GIB* *Noiseline GIB*



- This drawing is copyrighted and the author's property and must not be retained, copied or used without the authority of Restruct Commercial Doors Ltd.

- Do not scale from the drawing; use the provided dimensions only.

- Bring all discrepancies to the attention of the author.

- Restruct Commercial Doors do not take responsibility for the measurements provided by others.

- Terms & Conditions apply (Terms of Trade)

**Step 1. Prepare Wall Framing**



**Steps 2-6. GIB and Corner Stop Preparation**



**Steps 7-15. Door Installation Photos and Declarations**

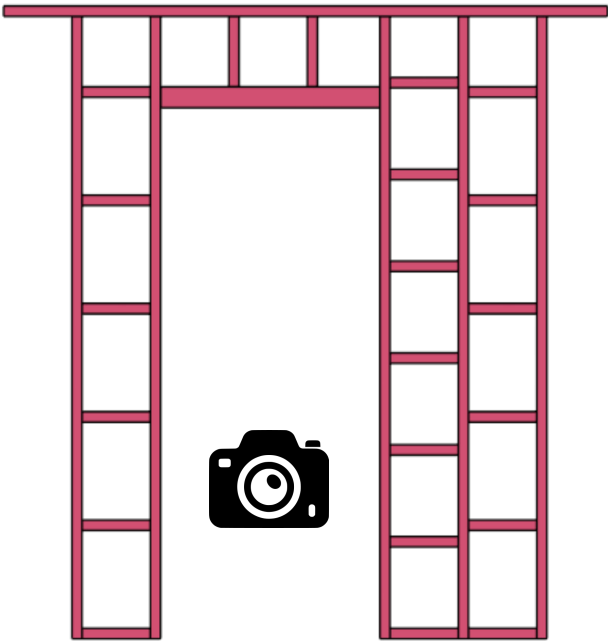


Fig.1



Fig.3

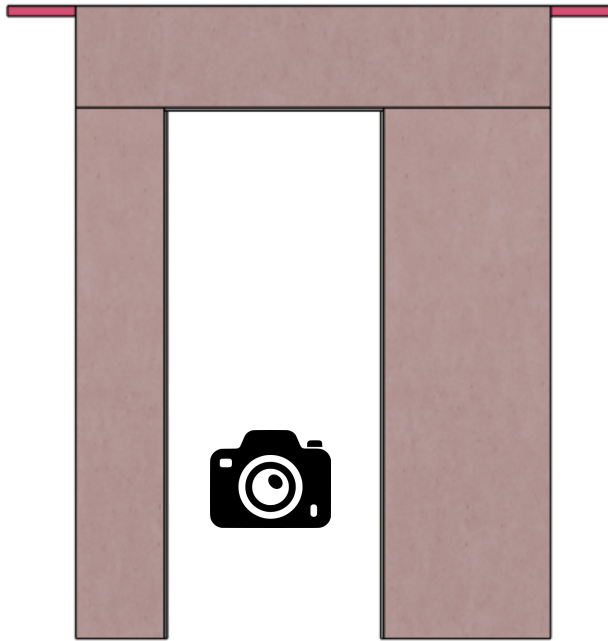


Fig.4



Fig.6

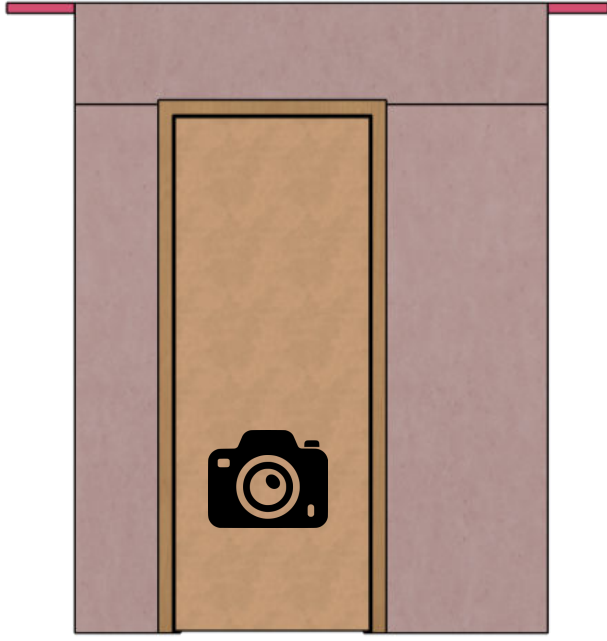


Fig.7



Fig.9

**Trim Opening / Rough Opening**  
Rough Opening Height = Leaf Height + Floor Clearance + 55mm  
Rough Opening Width Single Door = Leaf Width + 104mm  
Rough Opening Width Double / Door and Half = Leaf1 Width + Leaf2 Width + 110mm

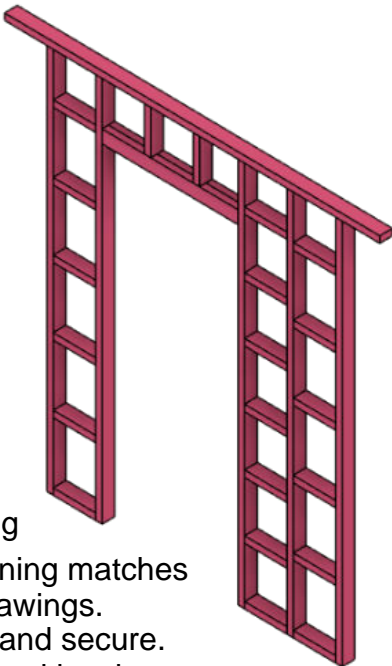


Fig.2

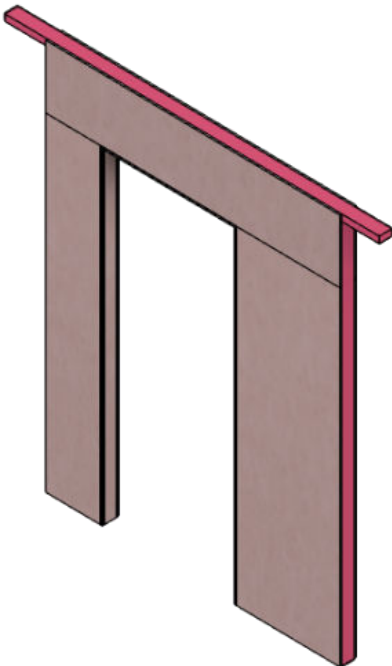


Fig.5

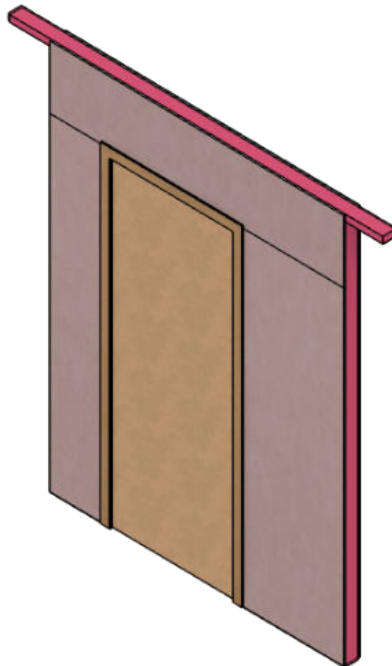
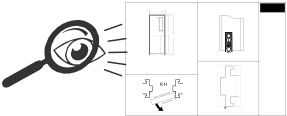


Fig.8

**Step 1. Inspect Framing**

- Ensure the rough opening matches the approved shop drawings.
- Studs must be plumb and secure.
- Lintel(head) installed and level.
- Confirm nog placements for GIB support.



*Fyreline GIB*  
-or-  
*Noiseline GIB*

**Follow STEP numbers. Within each column, read top → bottom. Figures are visual references.**

Description:

Drawing Title:

Drawing Status:

Scale at - A3

Company:

RCD#

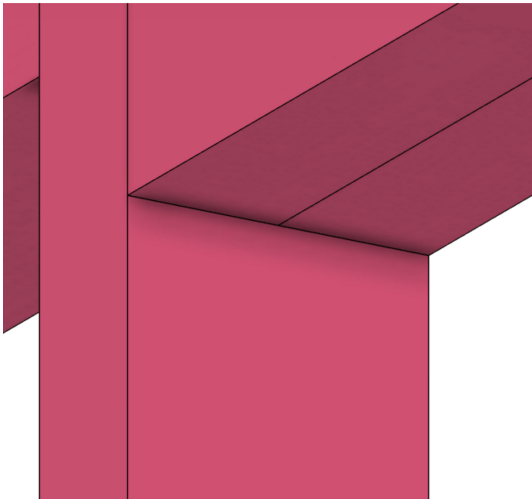
Revision:

Drawing by:

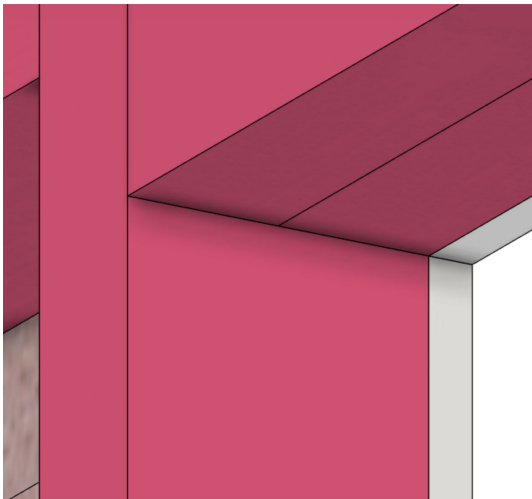
Checked by:

Checked Date:

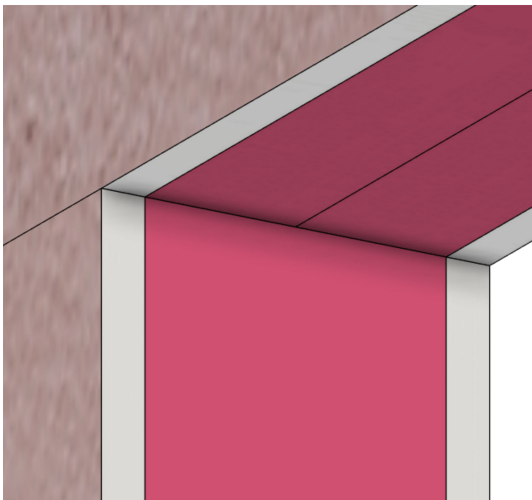
GIB & Corner Stop Preparation



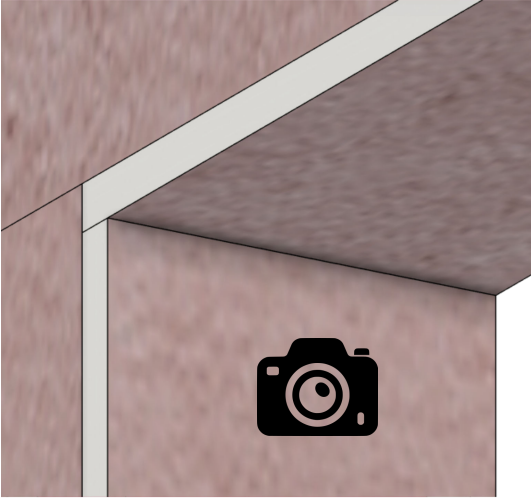
**Step 1.**Timber Framing **Fig.10**  
Even where *metal stud framing* is used, the provision of timber studs around the cavity remains a requirement



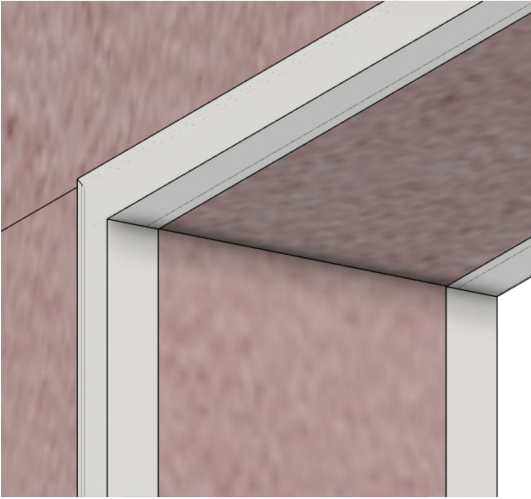
**Steps 2.** 13mm or 16mm GIB - Back **Fig.11**



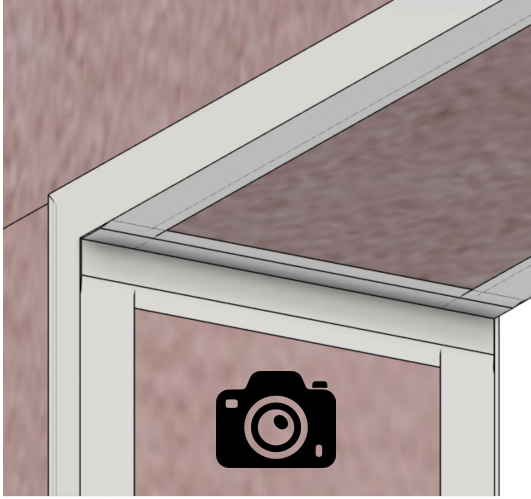
**Steps 3.** 13mm or 16mm GIB - Front **Fig.12**



**Steps 4.** 13mm or 16mm GIB Sides and Head **Fig.13**

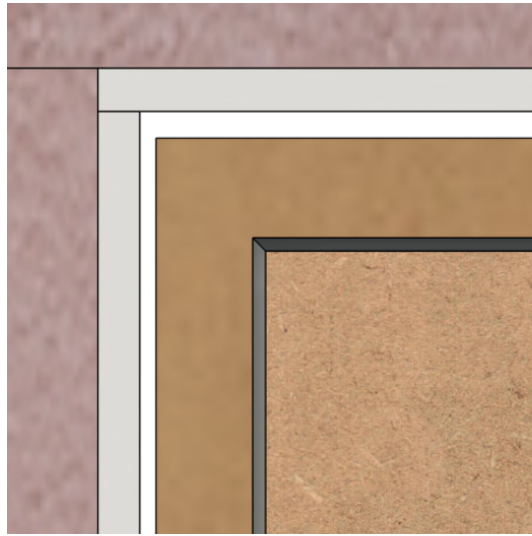


**Step 5.** SquareStop External Corners with Paper Tape or Angled Metal Stop **Fig.14**

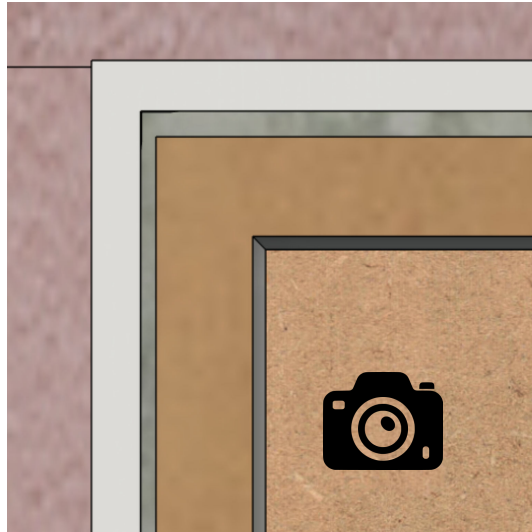


**Step 6.** SquareStop Internal Corners with Paper Tape or Angled Metal Stop **Fig.15**

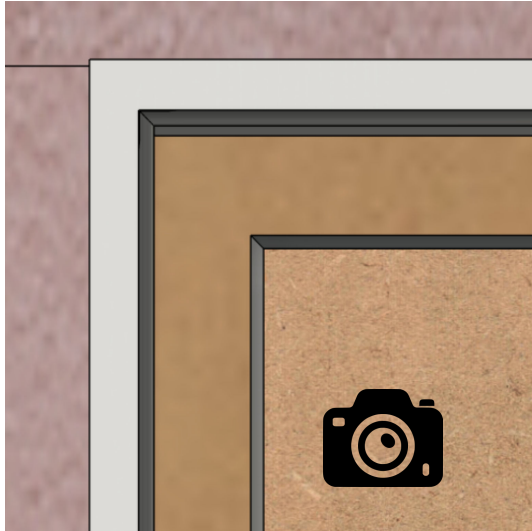
Fixing Pre-assembled Doorset



**Step 7.** Insert RCD Pre-assembled Doorset into the Prepared Cavity **Fig.16**



**Step 8.** Use Non-Combustible Packing to fill the gaps between Jamb and GIB & Prepare Fixings **Fig.17**



**Step 9.** Apply provided H.B Fuller Fire Rated Sealant Continuous Around The Frame on All sides **Fig.18**

- This drawing is copyrighted and the author's property and must not be retained, copied or used without the authority of Restruct Commercial Doors Ltd.

- Do not scale from the drawing; use the provided dimensions only.

- Bring all discrepancies to the attention of the author.

- Restruct Commercial Doors do not take responsibility for the measurements provided by others.

- Terms & Conditions apply (Terms of Trade)

Description:	
Drawing Title:	
Drawing Status:	
Scale at - A3	
Company:	
RCD#	Revision:
Drawing by:	
Checked by:	
Checked Date:	



# Fixing Pre-assembled Doorset - 3D Perspective



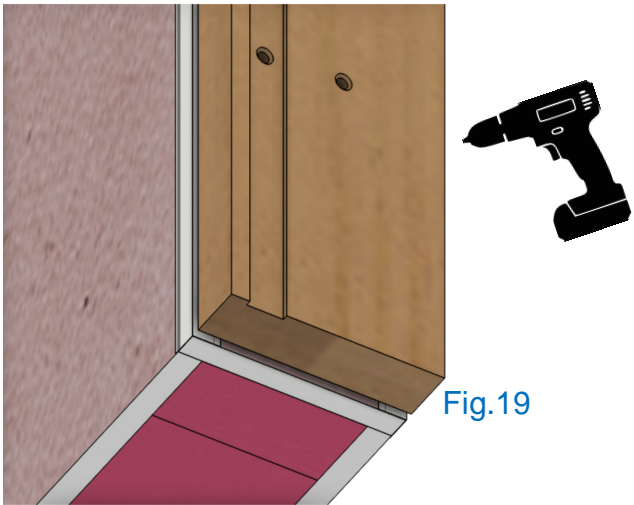
- This drawing is copyrighted and the author's property and must not be retained, copied or used without the authority of Restruct Commercial Doors Ltd.

- Do not scale from the drawing; use the provided dimensions only.

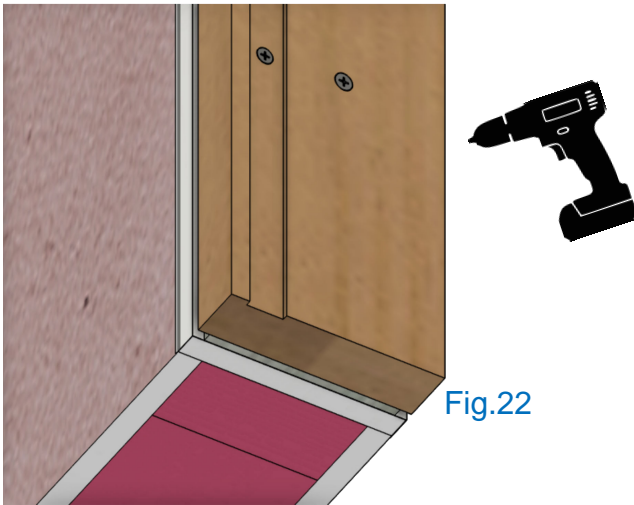
- Bring all discrepancies to the attention of the author.

- Restruct Commercial Doors do not take responsibility for the measurements provided by others.

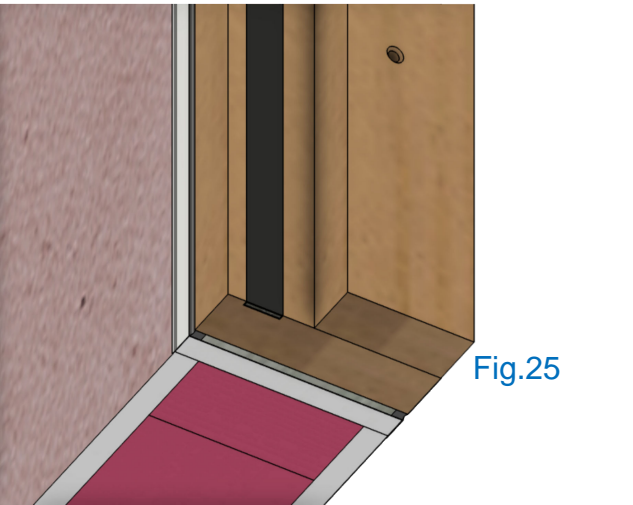
- Terms & Conditions apply (Terms of Trade)



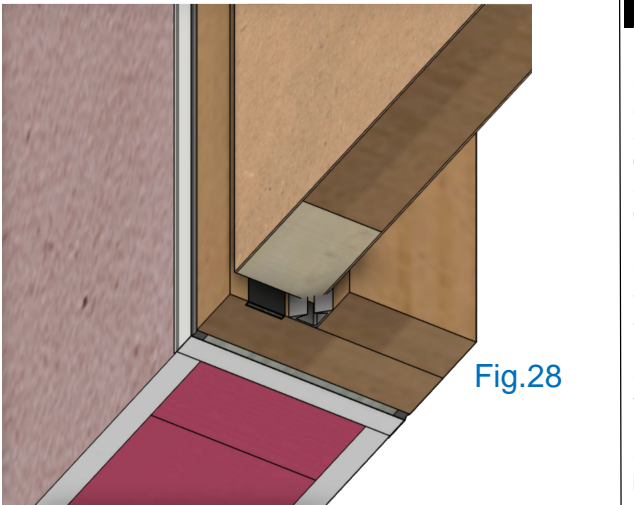
**Step 7.** Insert RCD Pre-assembled Door into the Prepared Cavity



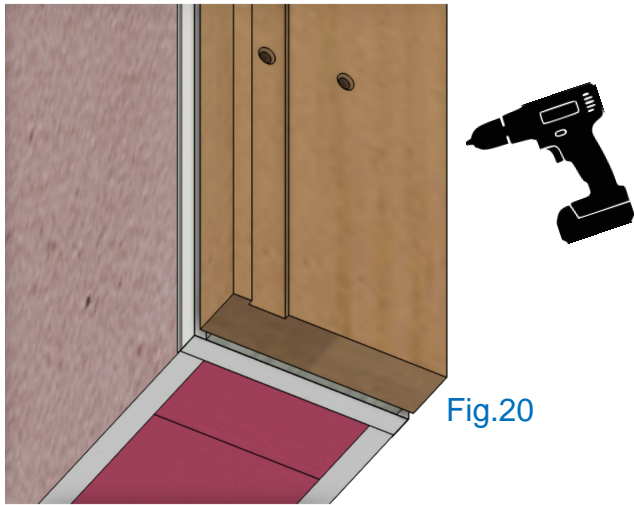
**Step 8.2** Set and secure one jamb leg plumb. Shim and fasten the opposite leg to achieve proper alignment



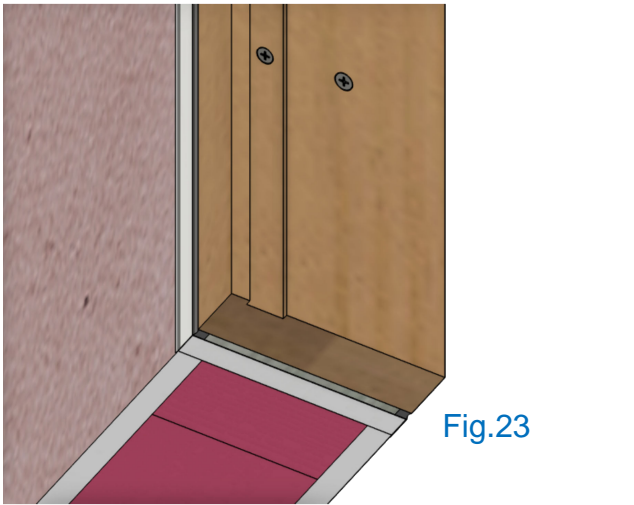
**Step 11.** Set the door stop in position and prepare the fixing points



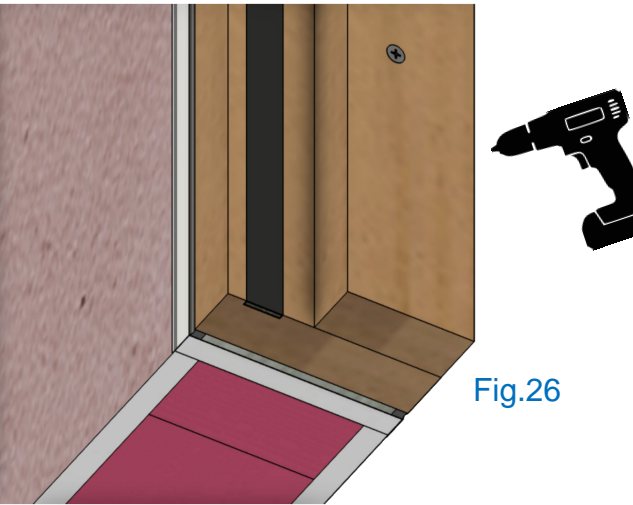
**Step 14.** Verify uniform perimeter gaps, correct sealing between the door leaf and frame, and compliance with specified floor clearance (Check Approved Shop Drawing)



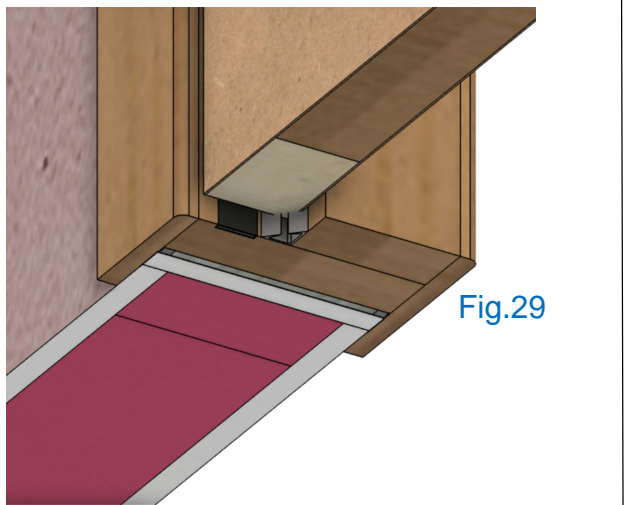
**Step 8.** Use Non-Combustible Packing to fill the gaps between Jamb and GIB & Prepare Fixings (example: Hardie Board)



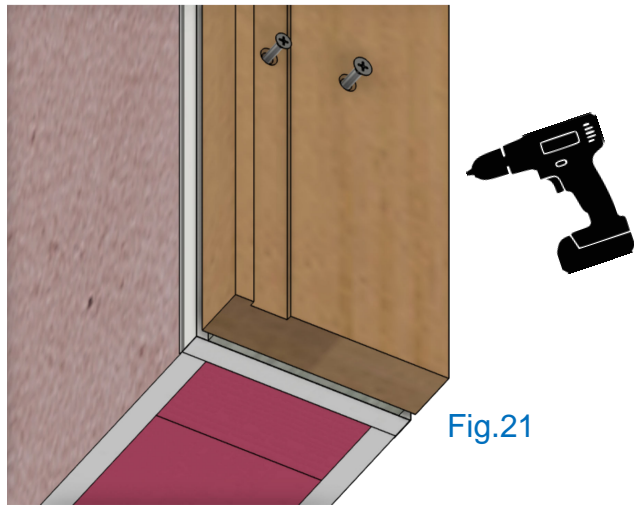
**Step 9 .** Apply provided H.B Fuller Fire Rated Sealant Continuous Around The Frame on All sides



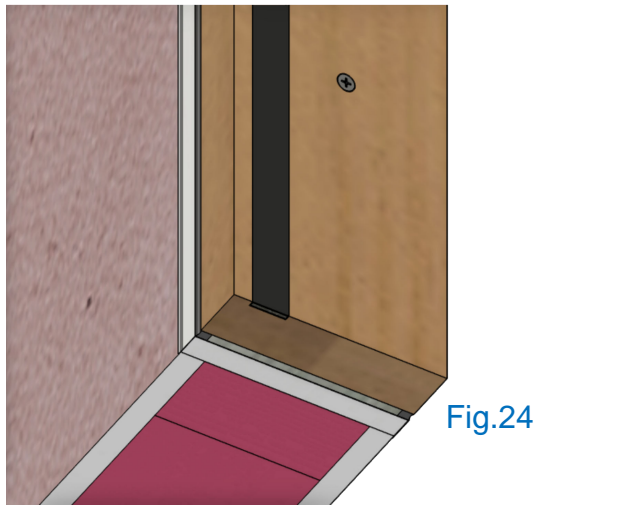
**Step 12 .** Fix the doorstop in place 12g (Gauge) x 65mm Fixing Screws



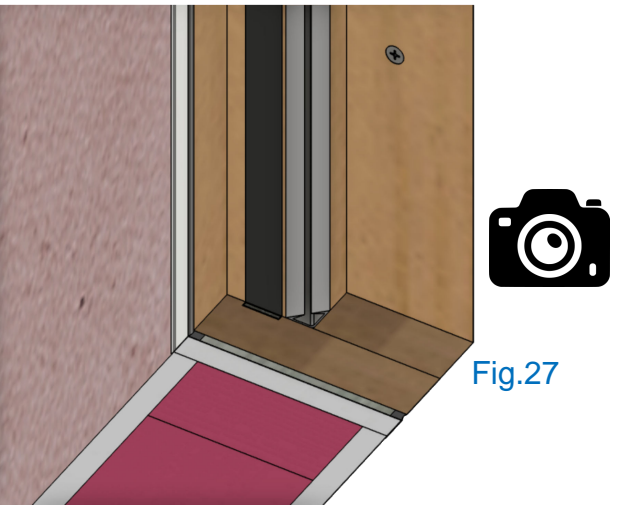
**Step 15.** Add Architrave (Not supplied)



**Step 8.1** Add SS 12g (Gauge) x 100mm Fixing Screws behind Intumescent strip and on Face



**Step 10.** Insert the Intumescent Strips provided into the prepared slots



**Step 13.** Position the supplied perimeter seals in the internal corner between the jamb and door stop, ensuring continuous coverage to the head and both sides

**Pro Tips:**  
Fixing screw positions shall be a minimum of 150 mm from the top and bottom of the inside frame, with a maximum spacing of 400 mm between screw centres (Fig.20-26)

Complete all varnishing or painting and seal all fixing holes before installation of the Intumescent strip and perimeter seals (Fig.27)

Description:
Drawing Title:
Drawing Status:
Scale at - A3
Company:
RCD#                      Revision:
Drawing by:
Checked by:
Checked Date: